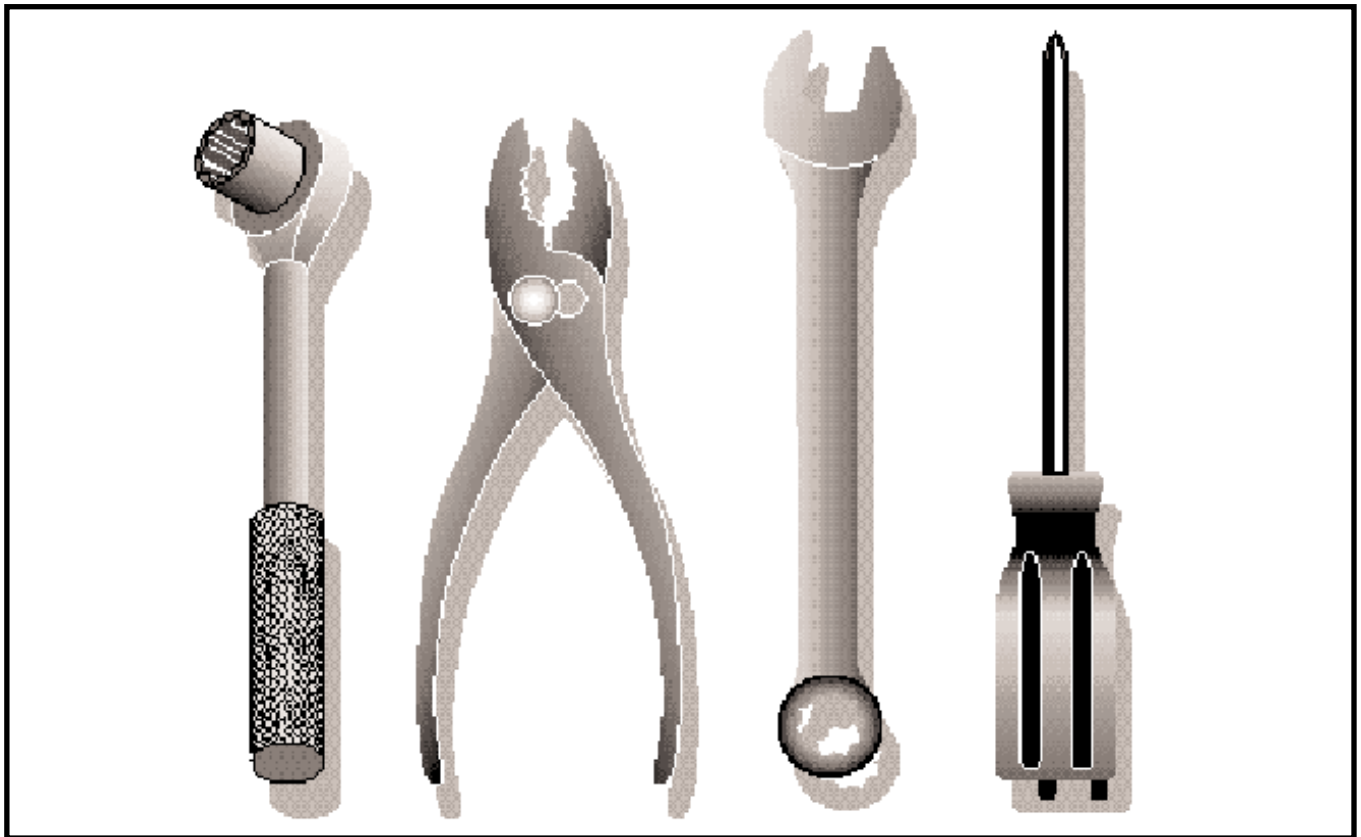
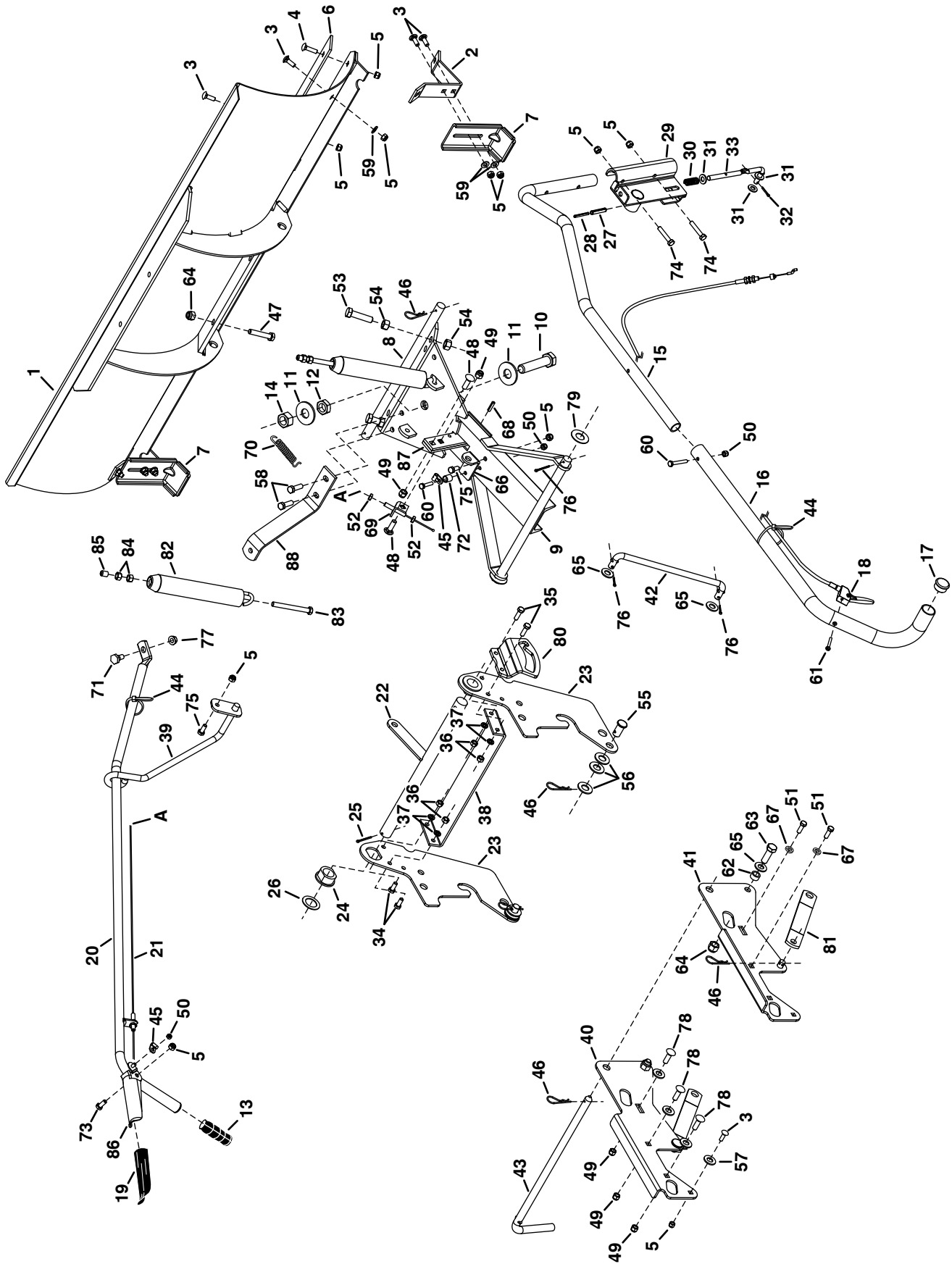


505 56 88-05

48 Inch Dozer Blade (45-0455)



REPAIR PARTS FOR MODEL 45-0455 - 48" DOZER BLADE



REPAIR PARTS FOR MODEL 45-0455 - 48" DOZER BLADE

REF	PART NO.	QTY.	DESCRIPTION	REF	PART NO.	QTY.	DESCRIPTION
1	65379	1	48" Blade Assembly	46	43343	7	Haircotter Pin, 3/32" x 2-5/16"
2	25701	2	Skid Shoe Bracket	47	43510	2	Hex Bolt, 1/2" x 2-3/4"
3	44326	12	Carriage Bolt, 5/16-18 x 1"	48	710-0305	2	Carriage Bolt, 3/8" x 1-1/4"
4	43682	2	Carriage Bolt, 5/16-18 x 1-1/4"	49	HA21362	10	Nylock Hex Nut, 3/8"
5	47810	19	Nylock Hex Nut, 5/16"	50	47189	3	Nylock Hex Nut, 1/4"
6	23639	1	Wear Plate 48"	51	43001	4	Hex Bolt, 3/8" x 1"
7	R3132J	2	Skid Shoe	52	712-0256	2	Hex Jam Nut, 5/16"
8	62556	1	Pivot Plate Assembly	53	41596	2	Hex Bolt, 1/2" x 2"
9	65358	1	Channel Assembly	54	712-0206	4	Hex Nut, 1/2"
10	710-0741	1	Hex Bolt 3/4-10 x 3-1/2"	55	711-0309	2	Clevis Pin, 5/8" x 1.2"
11	1540-162	1	Washer 3/4"	56	R19212113	6	Washer, 5/8" SAE
12	40436	1	Hex Jam Nut, 3/4-10	57	R19172410	8	Washer, 1/2" x 1-1/2"
13	731-0869	1	Plastic Grip	58	43087	2	Hex Bolt, 3/8" x 1-1/4"
14	40598	1	Hex Lock Nut, 3/4-10	59	43081	6	Washer, 5/16"
15	49264	1	Lift Handle Tube (Lower)	60	43648	2	Hex Bolt, 1/4" x 1-1/2"
16	49265	1	Lift Handle Tube (Upper)	61	49266	1	Oval Screw, #10 x 1"
17	47674	1	Tube Plug	62	47364	2	Spacer, .52" x .75" x .4"
18	49912	1	Trigger & Lift Cable Assembly	63	43020	2	Hex Bolt, 1/2" x 1-1/2"
19	7071	1	Handle Grip	64	712-3083	4	Nylock Nut, 1/2"
20	65348	1	Handle Assembly	65	R19171616	4	Washer, 1/2" x 1" (Small)
21	49808	1	Control Cable	66	25688	1	Lift Rod Bracket
22	65359	1	Lift Assembly	67	43003	4	Lock Washer, 3/8"
23	24312	2	Mounting Bracket	68	43349	1	Spring Pin, 1/4" x 1"
24	741-0192	2	Flange Bearing (w/ Flats)	69	05762	1	Cable Mount Bracket
25	43093	1	Cotter Pin, 1/8 x 1-1/2"	70	43348	1	Extension Spring
26	43601	1	Washer, 1.59" x 1.032" x 0.60"	71	48106	1	Shoulder Bolt
27	47368	1	Spring Pin, 5/16" x 1-3/4"	72	23658	1	Spacer, .39" x .56" x .62"
28	47369	1	Spring Pin, 3/16" x 1-3/4"	73	43085	1	Hex Bolt, 5/16" x 1-1/2"
29	63773	1	Bracket Handle Lift Assembly	74	43084	2	Hex Bolt, 5/16" x 1-3/4"
30	732-0306	1	Compression Spring	75	43182	2	Hex Bolt, 5/16" x 3/4"
31	R19131316	3	Washer, 3/8" x 13/16" x 1/16"	76	43010	4	Cotter Pin, 1/8" x 1-1/4"
32	142	1	Cotter Pin, 1/8" x 3/4"	77	44072	1	Whizlock Hex Nut, 3/8"
33	48049	1	Index Lift Rod	78	43350	6	Carriage Bolt, 3/8" x 1"
34	43063	2	Hex Bolt, 5/16" x 1"	79	43009	2	Washer, 3/4"
35	43840	2	Hex Bolt, 5/16" x 1-1/4"	80	24298	1	Lift Bracket
36	43064	4	Hex Lock Nut, 5/16"	81	25725	2	Lift Link
37	43086	4	Lock Washer, 5/16"	82	R9466R	2	Trip Spring
38	25666	1	Spacer Bracket	83	44071	2	Hex Bolt, 3/8" x 3-1/2"
39	65436	1	Tube Guide Bracket Ass'y.	84	43015	4	Hex Nut, 3/8"
40	65403	1	Side Plate (Left Hand)	85	44074	2	Plastic Cap
41	65402	1	Side Plate (Right Hand)	86	62561	1	Release Grip Assembly
42	49819	1	Lift Rod	87	23151	2	Angle Lock Bar (Short)
43	47066	1	Attachment Rod	88	23646	1	Blade Pivot Bracket
44	726-0178	2	Nylon Tie		40820	1	Owners Manual
45	746-0260	2	Cable End Fitting				



Please do not return this product to the Store

For Missing Parts Or Questions on How to Assemble:

1. Call Agri-Fab at 1-800-448-9282 Option # 1
Monday through Friday, 7 am to 5 pm CST
2. Fax Agri-Fab at 217-728-2032 or email info@agri-fab.com

Missing part shipments are normally shipped from the Agri-Fab factory within 24 hours zip code 61951. 1 to 5 days delivery for UPS.

For Replacement and/or Repair Parts:

1. Call Agri-Fab at 1-800-448-9282 Option # 1
Monday through Friday, 7 am to 5 pm CST
2. Visit Agri-Fab's website at <http://www.agri-fab.com> and view illustrated parts breakdowns and parts listing and purchase parts via our <http://www.speedepart.com> site online.