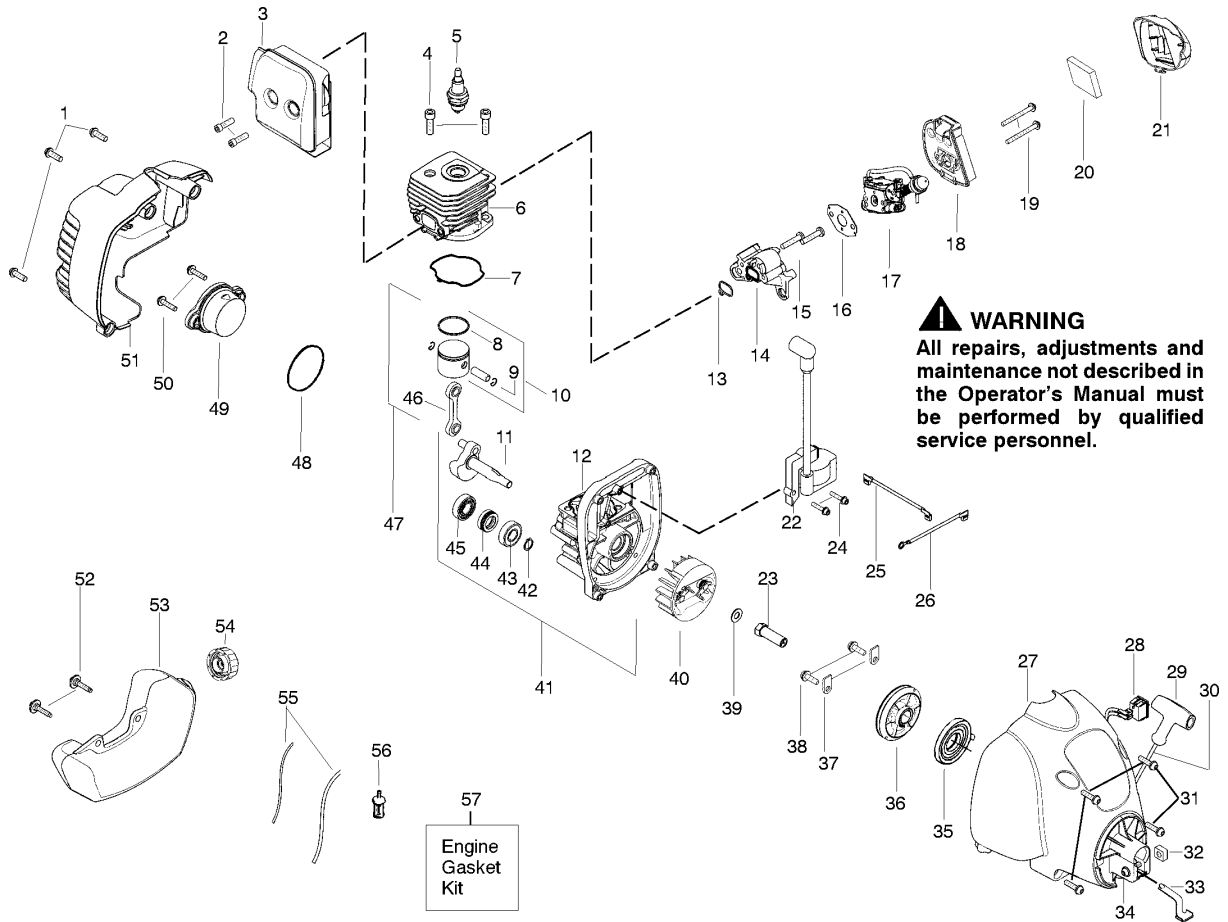




# SPARE PARTS LIST

TRIMMERS/EDGERS

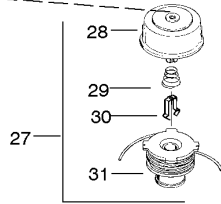
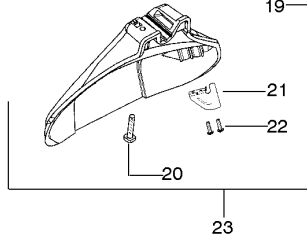
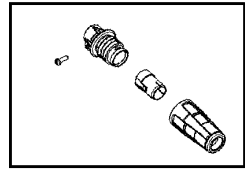
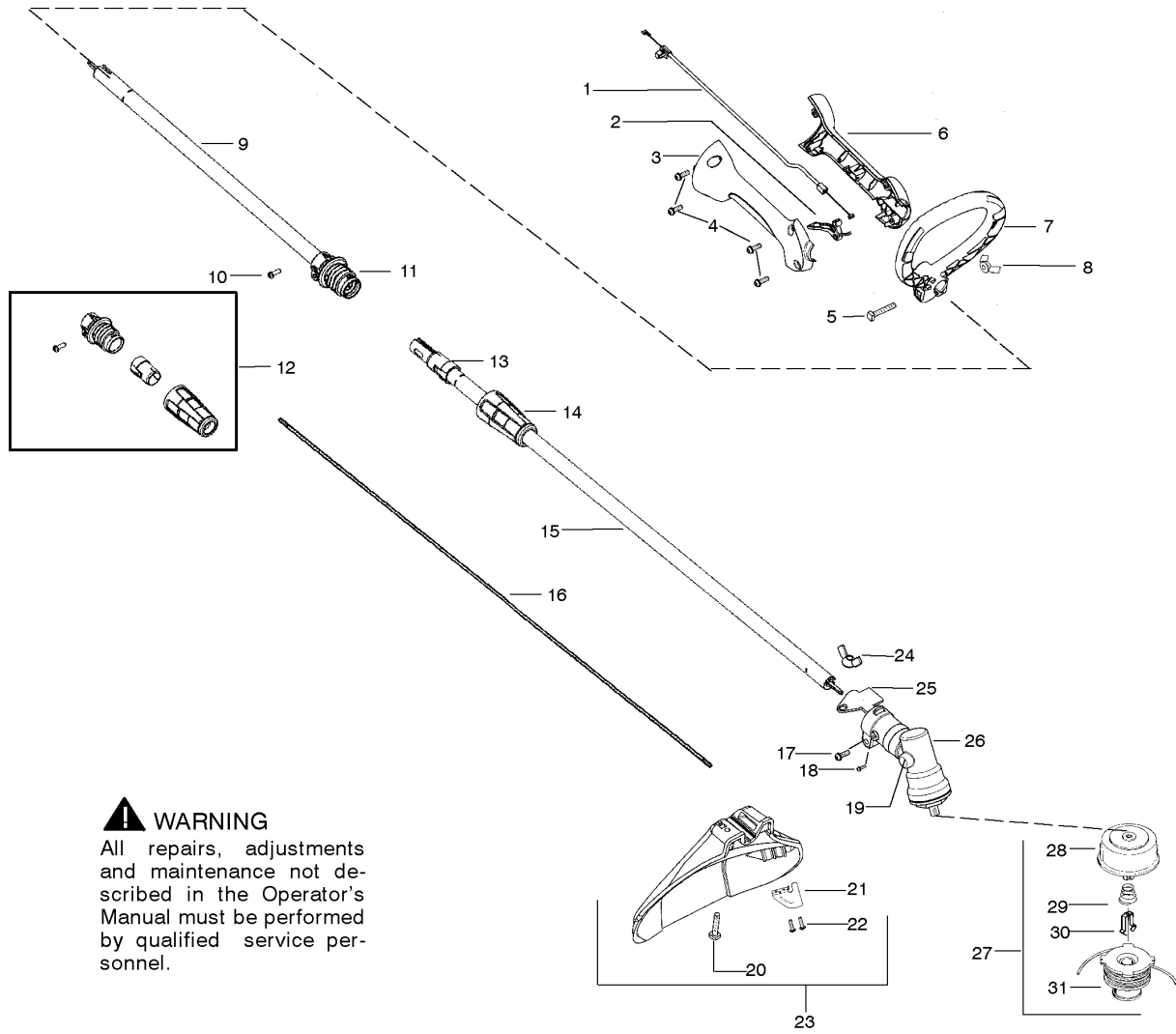
W25SBK, 2015-09



## ENGINE

W25SBK, 2015-09

Ref	Part No	Description	Remark	QTY KIT
1	530 01 58-14	SCREW		1
2	530 05 89-82	BOLT		1
3	545 22 79-01	ASSY MUFFLER/SHIELD	INCL #2	1
4	530 01 59-53	SCREW		1
5	952 03 02-49	SPARK PLUG		1
6	530 01 25-41	CYLINDER		1
7	000 00 00-00	W/O DESCRIPTION	REF #57	1
8	545 15 40-01	PISTON RING		1
9	530 01 51-62	CIRCLIP		1
10	530 07 13-57	KIT PISTON	"INCL #8, 9"	1
11	530 05 78-29	CRANKSHAFT ASSY		1
12	530 01 25-82	CRANKCASE	"INCL #43, 44, 45"	1
13	000 00 00-00	W/O DESCRIPTION	REF #57	1
14	530 05 75-47	ADAPTER		1
15	530 01 64-41	SCREW		1
16	000 00 00-00	W/O DESCRIPTION	REF #57	1
17	577 13 59-02	KIT		1
18	530 05 75-85	BASE AIRBOX		1
19	530 01 64-28	SCREW		1
20	530 05 77-81	AIR FILTER		1
21	576 69 44-01	COVER		1
22	578 28 70-01	IGNITION MODULE		1
23	530 03 86-04	DRIVE COUPLING		1
24	545 00 39-03	SCREW		1
25	530 01 46-63	CABLE		1
26	581 42 59-01	WIRE ASSY		1
27	580 41 08-02	HOUSING		1
28	545 08 18-69	KIT SWITCH MOMENTARY		1
29	530 02 75-69	STARTER HANDLE		1
30	530 07 17-98	KIT		1
31	530 01 63-86	SCREW		1
32	530 01 61-24	NUT		1
33	530 05 75-88	CLIP		1
34	530 01 64-30	SCREW		1
35	545 05 49-01	SPRING		1
36	545 05 04-07	KIT		1
37	530 02 75-23	RETAINER		1
38	530 01 62-24	SCREW		1
39	530 01 58-28	WASHER		1
40	530 05 41-15	FLYWHEEL		1
41	530 07 17-68	ASSEMBLY	"INCL #11, 12, 42"	1
42	530 01 59-41	CLIP		1
43	530 05 57-28	BEARING		1
44	530 01 92-64	SEAL		1
45	530 03 21-25	BEARING		1
46	530 06 99-45	CONNECTING ROD		1
47	530 07 17-85	PISTON	"INCL #10, 46"	1
48	000 00 00-00	W/O DESCRIPTION	"REF #49, 57"	1
49	530 05 79-54	PLUG	INCL #48	1
50	530 01 63-86	SCREW		1
51	545 01 10-04	REAR COVER		1
52	530 01 64-45	SCREW FUEL TANK RETAINER		1
53	581 26 37-01	FUEL TANK ASSY		1
54	579 74 66-01	FUEL CAP ASSY		1
55	000 00 00-00	W/O DESCRIPTION	REF #53	1
56	530 09 56-46	FILTER		1
57	530 07 17-50	GASKET KIT	"INCL #7, 13, 16, 48"	1



## SHAFT &amp; HANDLE

W25SBK, 2015-09

Ref	Part No	Description	Remark	QTY	KIT
1	530 05 79-91	ASSEMBLY		1	
2	530 05 80-00	TRIGGER		1	
3	530 05 75-82	THROTTLE HSG. (RIGHT)		1	
4	530 01 58-80	SCREW		1	
5	530 01 58-21	SCREW		1	
6	530 05 75-81	HSG THROTTLE LH		1	
7	530 05 85-80	HANDLE ASSY		1	5,8
8	530 01 61-52	WING NUT		1	
9	545 00 80-59	SHAFT		1	10,11
10	530 01 58-80	SCREW		1	
11	581 53 50-01	DRIVE SHAFT ASSY		1	10,13,14
12	581 53 50-01	DRIVE SHAFT ASSY		1	10,11,13,14
13	581 53 50-01	DRIVE SHAFT ASSY		1	10,11,14
14	581 53 50-01	DRIVE SHAFT ASSY		1	10,11,13
15	581 49 49-03	DRIVE SHAFT ASSY		1	13,14
16	545 20 67-01	FLEX SHAFT ASSY		1	
17	530 01 60-14	SCREW		1	
18	530 01 62-24	SCREW		1	
19	575 72 45-01	PLUG		1	
20	530 01 58-20	SCREW		1	
21	530 05 22-85	LIMITER CAP		1	
22	530 01 59-66	SCREW		1	
23	530 07 17-71	KIT SHIELD		1	20,21,22,24
24	530 01 61-52	WING NUT		1	
25	530 09 60-67	BRACKET		1	
26	530 09 60-68	ASSY GEAR BOX,		1	
27	952 71 15-50	TRIMMER HEAD		1	28,29,30,31
28	530 09 57-72	ASSEMBLY		1	
29	530 05 32-41	SPRING		1	
30	530 40 19-57	RETAINER		1	
31	952 71 15-51	SPOOL		1	